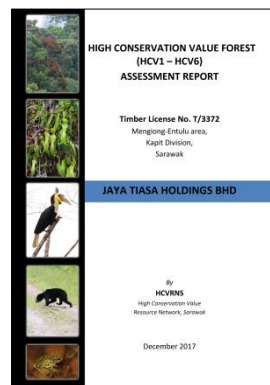


Public Summary
Mengiong-Entulu FMU (T/3372)
Summary of Identified
High Conservation Value (HCV) Attributes

- An assessment on High Conservation Value (HCV) attributes in Mengiong-Entulu FMU (T/3372) has been conducted with the guidance provided in WWF-Malaysia's October 2009 *High Conservation Value Forest (HCVF) Toolkit for Malaysia*.
- The final report – *High Conservation Value Forest (HCV 1 – HCV 6) Assessment Report (for) Timber License No. T/3372, Mengiong-Entulu Area, Kapit Division, Sarawak* – was produced in December 2017, of which it has identified the presence of 3/6 HCV. Three out of four attributes in HCV 1 and 3/6 attributes in HCV 4 were 'Present'; including 1/6 attributes in HCV 4 was 'Potentially Present' (HCVRNS, 2017) (**Figure 1**).

Figure 1: The HCV report for T/3372.



- These findings shall form the baseline for future monitoring of HCV. **Table 1** shows the summary of HCV findings in the FMU.

Table 1: Summary of HCV findings at Mengiong-Entulu FMU (T/3372)^a.

Category	HCV	Data Source/Attributes	Findings
HCV 1: Biodiversity Values	1.1 - Protected Areas	Determine if the forest area is adjacent to a legally gazetted protected area listed in the Protected Areas Master List.	Not Present
	1.2 - Threatened and Endangered Species	Determine if forest area contains any species of flora and/or fauna categorized by IUCN as CR, EN or VU, CITES Appendix 1 or any species protected under the Malaysian legislation.	Present
	1.3 - Endemism	Determine if forest area contains endemic species of flora or fauna.	Present
	1.4 - Critical Temporal Use	Determine if forest area is used by endangered wildlife as critical feeding, nesting/roosting sites, pathways or contains salticks.	Present
HCV 2: Landscape-level Forest	2	Determine if forest area falls within or next to a large forest complex, or forms a critical linkage between large forest complexes.	Present
HCV 3: Ecosystems	3	Determine the presence, abundance and persistence of umbrella species in the area, if possible and data is available.	Present
		Does the forest contain or is part of a threatened or endangered ecosystem?	Not Present
HCV 4: Services of Nature	4.1 - Watershed Protection	Determine if forest area 1) has been legally gazetted under the National Forestry Act, 1984 (Peninsular Malaysia), Sarawak Water Ordinance or classified as 'Terrain Class IV' (Sarawak); or 2) has been legally gazetted for water protection under any other federal or state legislation; or 3) is a dam catchment area.	Present
		Determine if forest area contains riparian area covered under DID guidelines.	Not Present
	4.2 - Erosion Control	Sarawak: Determine if forest area is classified as 'Terrain Class IV'.	Present
	4.3 - Barriers to Destructive Fire	Area prone to fire: Determine if area is prone to fire (e.g. peat swamp and/or forest areas that have been subjected to fire previously. Include the examples of fire-prone areas (e.g. podzolic or edaphic soil).	Not Present
Adjacent HCVs: Determine if area is adjacent to any forests containing any other HCVs.		Potentially Present	
HCV 5: Basic Needs of Local Communities	5	Adjacent plantations or settlements (Sarawak: 'temuda'): Determine if forest area is adjacent to forest plantation (any plantation-forest edge is susceptible to fire during long dry periods) or settlements (Sarawak: 'temuda').	Present
		Presence of Settlements: Determine if forest area contains or is adjacent to any settlements. Identify and consult with the relevant communities.	Not Present
HCV 6: Cultural Identity of Local Communities	6	Level of Dependence on Forest Produce: Determine the level of dependence of identified local communities on forest produce (e.g. minor forest products) and services for basic subsistence/health needs. Identify and map out specific locations through a participatory approach with the communities in question.	Not Present
		Determine if forest contains areas and/or sites important to a local community's cultural, ecological, or religious activity.	Not Present

^a HCVRNS. 2017. *High Conservation Value Forest (HCV 1 – HCV 6) Assessment Report (for) Timber License No. T/3372, Mengiong-Entulu Area, Kapit Division, Sarawak*. High Conservation Value Resource Network, Sarawak. 79 p.

- The HCV Report has been updated in March 2023 (**Figure 2**) and its status to-date is as indicated in **Table 2** (*i.e.* based on ‘*Malaysian National Interpretation for the Identification of High Conservation Values*’ by HCV Malaysia Toolkit Steering Committee, 2018 (**Figure 3**)).

Figure 2: The updated HCV report for T/3372.

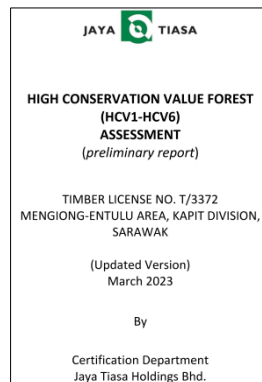


Figure 3: The front cover of ‘MNI-IHCV’ document.

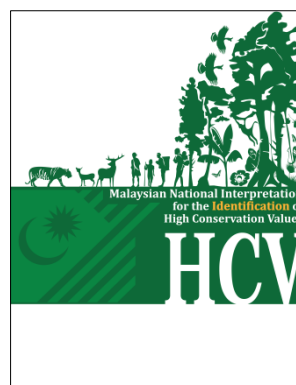


Table 2: Summary of HCV Status (as of Year 2023) for T/3372.

HCV	Definition	HCV Status							
		Year 2023	Year 2024	Year 2025	Year 2026	Year 2027	Year 2028	Year 2029	Year 2030
1	Species Diversity	Present							
2	Landscape-level ecosystems and mosaics	Present							
3	Ecosystem and Habitats	Not Present							
4	Ecosystem Services	Present							
5	Community Needs	Present							
6	Cultural Values	Not Present							

- The ‘*Forest Management Certification Liaison Committee (FMCLC)-cum-Stakeholder Consultation*’ meeting was chaired by FDS on 1st March 2023 at Kapit Resident Office, where findings; including prescribed management and monitoring action plans on the HCV attributes were presented to; discussed among; and generally been accepted by the affected stakeholders (**Table 3** and **Figure 4**).

Table 3: List of ‘direct’ (affected) stakeholders of T/3372.

No	Organisation Name	Type of Organisation	Contact Person	Contact No	Fax No	Email	Website	Address	Description
1	Forest Department of Sarawak	Government	Mdm. Santley Anak Berikom	082-495111 ext. 1235	082-495107	santleyb@sarawak.gov.my	https://forestry.sarawak.gov.my	Forest Department Sarawak Headquarters, Level 15, East Wing, Bangunan Bahlu Makmur II, Medan Raya, Petra Jaya, 93050 Kuching, Sarawak.	FDS facilitates and organizes SFM Awareness and FMCLC Meetings between FDS, FBU, local communities, NGOs and other relevant stakeholders.
2	Sarawak Forestry Corporation (SFC)	Semi-Government	Mdm. Nur Ashikin Ikhwan	084-337 444	084-337 411	nurai@sarawakforestry.com	www.sarawakforestry.com	Sibu Regional Office, SARAWAK FORESTRY Corporation, Level 12, Wilma Sarayan, No.1 Jalan Sarayan, 96000 Sibu, Sarawak.	SFC manages National Parks, TPAs, Wildlife Sanctuaries and anything that is related to wildlife management.
3	Kapit Resident Office	Government	Mr. Nyurak Kad	084-796 230	084-796 932	nyurak@sarawak.gov.my	https://kapit.sarawak.gov.my	Pentadbiran Bahagian Kapit, Aras 8 & 9, Kompleks Kerajaan Negeri, Jalan Bletoh, 96800 Kapit, Sarawak.	KRO provides basic demographic data, including profile, population, settlement status, and area of interest.
4	Bukit Mabong District Office	Government	Mdm. Tracy Nyipa	084-796 059	084-796 119	tracynyipa@sarawak.gov.my	https://kapit.sarawak.gov.my	Pejabat Daerah Bukit Mabong, Aras 8, Kompleks Kerajaan Negeri, Jalan Bletoh, 96800 Kapit, Sarawak.	BMDO provides basic demographic data, including profile, population, settlement status, and area of interest.
5	Land and Survey Department Kapit Division	Government	Mr. Jeffrey Ak Bala	084-796 844 ext. 321	084-796 731	jefferyb@sarawak.gov.my	https://landsurvey.sarawak.gov.my	Jabatan Tanah dan Survei Sarawak, Bahagian Kapit, Jalan Bletoh, 96800 Kapit, Sarawak.	LSD verifies land status, including reference on any land conflicts.
6	Natural Resources and Environment Board Sarawak (NREB)	Government	Mr. Gabriel Kalai Legai	084-337 428	084-327 488	gabrielk@nreb.gov.my	https://www.nreb.gov.my	Natural Resources and Environment Board Sarawak 20th Floor, Menara Pelita, Jalan Tun Abdul Rahman Yaakub Petra Jaya, 93050 Kuching, Sarawak.	NREB provides regulations, policies, and instructions for the preservation and improvement of the environment in relation to land use, safeguarding water sources, etc.
7	Jabatan Bekalan Air Luar Bandar (JBALB) Sarawak (Kapit Division)	Government	Mdm. Intan Nurhafizah Fazlana Binti Hamzah	082-263 109	082-263 078	intanf@sarawak.gov.my	https://jbalb.sarawak.gov.my/	Ibu Pejabat Jabatan Bekalan Air Luar Bandar (JBALB) Sarawak, Mezzanine dan Tingkat 1, Bangunan ST3, No.55, Jalan Simpang Tiga, 93350 Kuching, Sarawak.	JBALB manages water supply to rural areas.
8	WWF – Malaysia Kuching	NGO	Dr. Samantha Liew	082-247 420	082-241 531	sliew@wwf.org.my	https://wwf.org.my/	WWF-Malaysia Sarawak Office 7 th Floor, Bangunan Binamas Lot 138, Section 54, Jalan Padungan 93100 Kuching, Sarawak.	WWF is an international NGO with interests on conservation of nature and the environment; been involved with JPS on ‘Fish Assessment in Ulu Sg. Mangiong’ project.
9	Sarawak Energy Berhad	GLC	Mr. Deebak Subramani	082-388 388	082-341 063	deebak.subramani@sarawakenergy.com	https://www.sarawakenergy.com/	Sarawak Energy Berhad Menara Sarawak Energy, No. 1, The Isthmus, 93050 Kuching, Sarawak.	SEB manages Bateh HEP Project.
10	Jabatan Pertanian Sarawak	Government	Mr. Pranky Ak Soseilly Sintau	084-796 280	084-796 280	prankys@sarawak.gov.my	https://doa.sarawak.gov.my/	Kapit Divisional Agriculture Office Level 3, State Complex, Jalan Beteoh, 96800 Kapit, Sarawak.	JPS has jointly conducted a ‘Fish Assessment in Ulu Sg. Mangiong’ with WWF.

Figure 4: A combo picture showing the ‘*FMCLC-cum-Stakeholder Consultation*’ meeting at Kapit Resident Office on 1st March 2023.



- Other supporting documents to evaluate HCV attributes for T/3372 are shown in **Figure 5**; such as:
 - a. *Malaysian National Interpretation for the Management and Monitoring of HCVs*;
 - b. *SOP on Monitoring HCV Attributes*;
 - c. *SOP on Monitoring Status and Population Dynamics of Mammal, Avifauna and Herpetofauna Species*; and
 - d. *WWF-IFD’s Fish Assessment Report*.

Figure 5: A combo picture showing the relevant supporting documents for HCV evaluation at T/3372.

